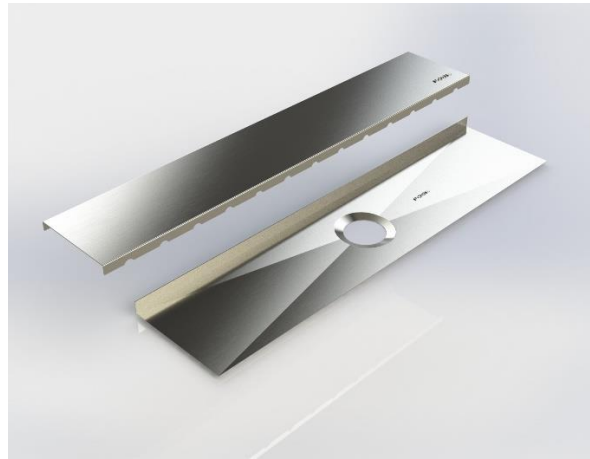


FOSK®

LINEAR DRAIN



LINEAR DRAIN 3 types of installation

Perfect fit" linear drain

This type of drain is designed for quick installation on three sides

Linear drain supported on a wall

This type of drain is designed to be installed on one or more walls.

Linear drain, central model

This type of drain is designed to be installed centrally or spaced from your shower wall.

TECHNICAL DATA SHEET

- Basic safety equipment
- Notched trowel (the depth of the teeth chosen will vary the height of your installation) High polymer cement glue (Flexibility up to 1/8 of thickness)
- A level
- Clear silicone tube
- Silicone applicator gun
- Mixing rod for mortar
- Drill for mixing
- Liquid membrane compatible with stainless steel or membrane in roll form
- Brush
- Reinforcement tape Recommended, but optional depending on the type of sill chosen.
- Ceramic finishing edge (optional)

* If you have chosen our stainless-steel shower thresholds, these steps and some materials will not be necessary for the installation.

Steps to Installation

* Please read this entire manual before proceeding with the installation*.

1. Make sure the floor is level.
2. Mark out the location of the drain connection. If your drain installation requires an eccentric drain connection, provide a longer base to position the outlet at the required location.
3. After selecting the length of the base, cut off the excess using a jigsaw or angle grinder with a metal blade (new and for stainless steel) from the base leaving the space for the liquid or roll membrane provided for this measurement. (See note on grid and sill no. 11)
4. The floor to wall joint must be made with liquid membrane, followed by a sealing tape and/or roll membrane.
5. You are now at the stage of fixing the base to the floor.
6. The base is the lowest point in your shower and can be installed directly on plywood or concrete.

Installation notes

To install and secure the base, here is a list of ideal materials to use when mounting the linear drain.

- Epoxy grout
- Mortar
- Polymer adhesive
- Tube construction adhesive (compatible with stainless steel)
- Silicone

7. Delineate the installation area and apply the mortar or adhesive with a trowel.
8. Place the base and press firmly around the drain.
9. On the base, install the ABS drain according to the code in effect in your area.
10. Check the level of the base, adjust if necessary

Notes to the installation

Please respect the complete curing time before proceeding with the following steps.

11. You can install your sills if the project requires them. The standard width of a threshold is 3 inches including the tiles. You must leave 1 / 8 of space around the grid. (See technical drawing)

12. It is time to make the slope for the grey water drainage. You can use either plywood, sand cement leveling, or expanded polystyrene.

13. Waterproofing: You must apply a layer of liquid membrane to make the joint between the piece that serves as a threshold and the base. Then, apply a reinforcing tape. Finally, you must apply a second layer of liquid membrane to seal the whole. All corners and angles must be reinforced with reinforcing tape. For roll membranes, follow the manufacturer's instructions.

14. The connection of the base to the drain must be made with the waterproofing membrane reinforced with reinforcing tape, or for the roll membrane, you must glue the membrane to the base using liquid membrane or a product provided for this purpose. Sand (coarse sandpaper) the surfaces where the liquid membrane will be applied to increase the adhesion of the liquid membrane.

Notes to the installation

It is important that the joint between the drain and the base be perfectly installed to have a complete watertightness.

15. You can now install your ceramic tiles.

* Make sure that the stainless-steel grate of the drain is well inserted in the space provided for this purpose.

* Before installing the tiles, please leave 1/8" of clearance around the drain grate (this clearance is necessary for daily maintenance).

* If there is a finishing border, you must install it at this time before starting the installation of the tile, following the installation notes provided at the end of this booklet.

* If you decide to install your tile without a finishing border, in this case, make sure to have uncut tile around the perimeter of the drain grate.

Installation notes or important

* Avoid contact between stainless steel and other metals. If contact occurs, please use a bead (gasket) between the two metals or use double-sided tape between the two metals.

* Note that if you must drill the base, make sure you use stainless steel hardware and fasteners.

You have now completed your installation.



Telephone: 514-418-7059

Email: info@fosk.ca

Web site: www.foskproduct.com