



CASCADE AND WALL CASCADE SUPPORT

MODEL: FSK-W-WW-8

SPECIFICATIONS:

Materials: 304 stainless steels

DIMENSIONS:

Cascade: width: 8" (7,9375"), Thickness: 1/4" (0.212")

Depth: 3 3/4" (real depth, adjustable during installation)

Support: Width: 9 7/8" (9.812"), Height: 2" (2.031")

Depth: 5/8" (0.5781")

***DEPTH MAY VARY DURING INSTALLATION ***

Water connexion : 1/2 NPT (male)

INCLUS DANS L'EMBALLAGE :

- Cascade
- Wall support
- Anchor and screws
- Manual



TOOLS AND MATERIALS YOU NEED FOR INSTALLATION:

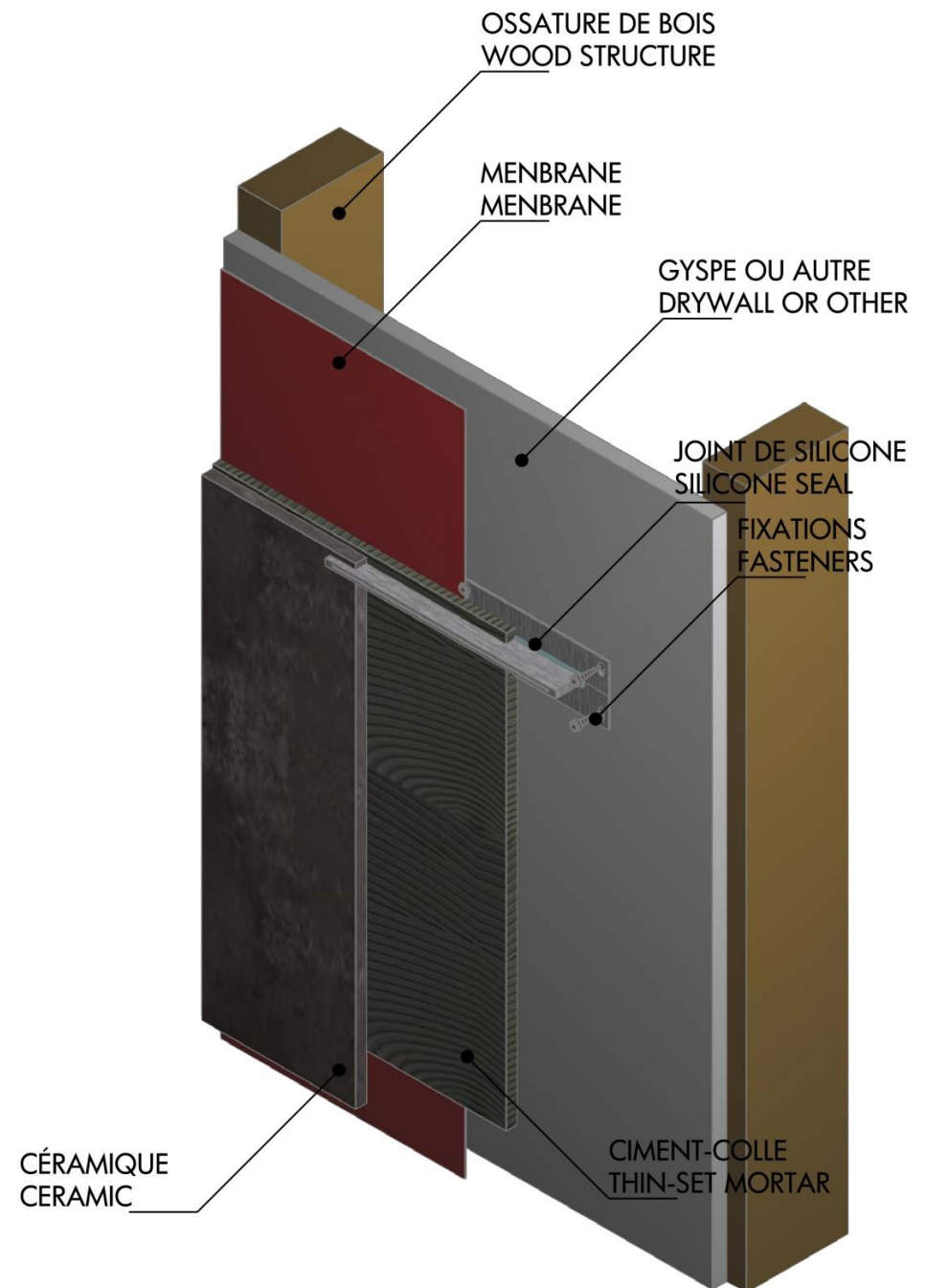
- DRILL
- LEVEL
- SILICONE GUN
- DRILL BIT: 5/16 (SEE ANCHORS INSTRUCTION)
- PLOMBING ACCESSORIES NECESSARY FOR CONNECTION
- SILICONE TUBE OFFER SUPERIOR ADHERENCE TO STAINLESS STEEL

INSTALLATION INSTRUCTION

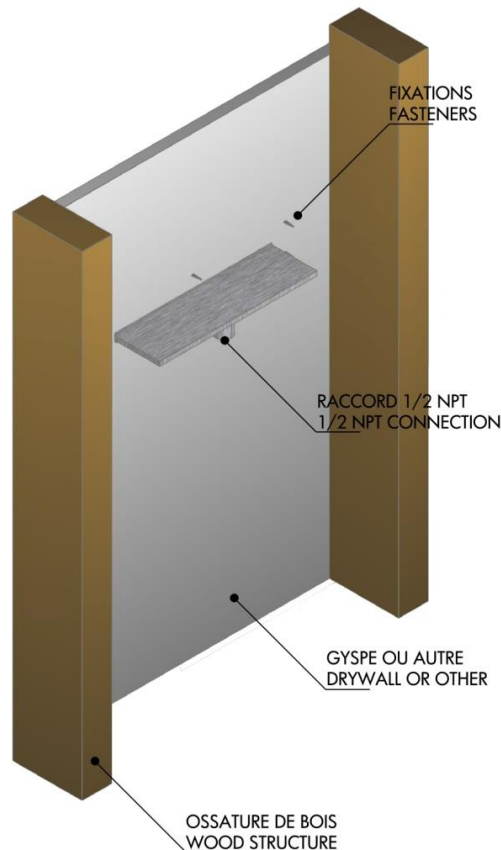
Suggested installation height: 80" to 84" from the floor

We suggest cutting a smaller piece of drywall at the installation spot, rather than to use full regular panel, this detail will simplify your installation, especially if no back access is possible. Later, once the cascade and its support, are installed and connected, this panel can be screwed to the wood structure and will be waterproof according to the method of the product in use.

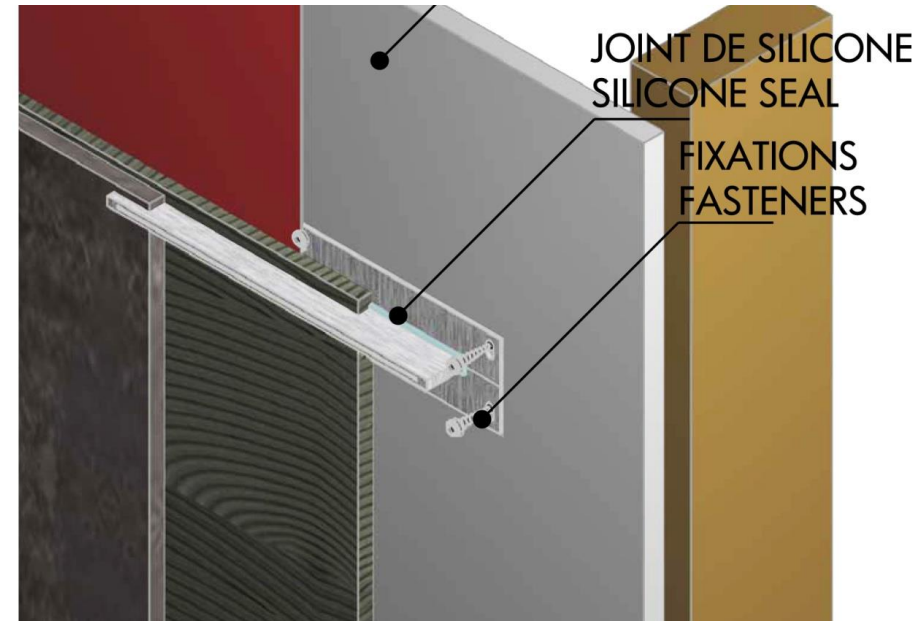
1. Plan the exact place where the cascade will be installed. Decide where and install the water supply.
2. On your support panel, (drywall or other, make an opening so that the cascade and the cascade support may be easily inserted thus allowing for a certain adjustment (the cascade support borders installed toward the inside of the wall)



3. Fasten with the included screws and anchors the cascade support in the groove. (See illustration showing installation and anchors instruction)
4. **Determine the installation depth desired (we suggest that a part of 1/4 (0,250'') to 3/8 (0,375'') exceed your ceramic in order to keep a discreet**



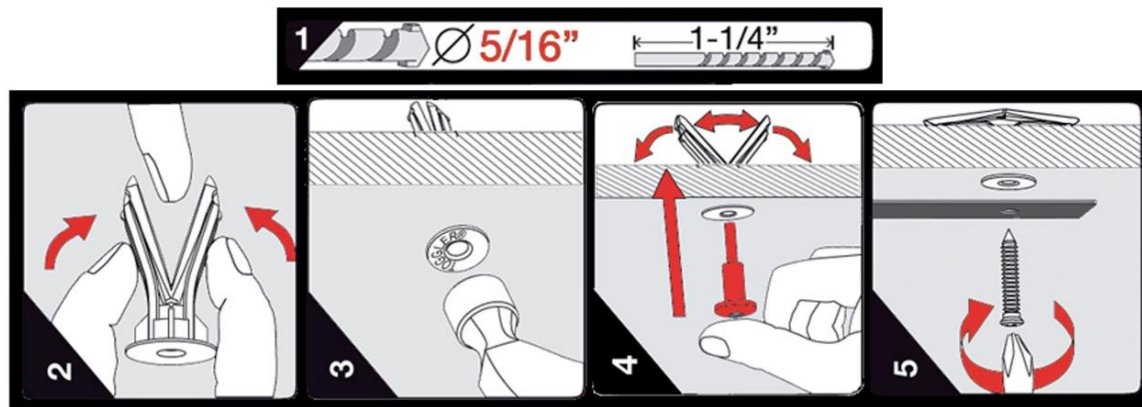
look). It is also highly suggested that a slight angle downwards at the end of the cascade be given in order to avoid that the water that flows out after you turn it off flows out toward the ceramic.



5. Insert the cascade in its support and tight gently the 4-cascade holding/positioning screw (be careful to not over tight and distorted the cascade) apply a silicone seal in order that the complete set become watertight and fixed the depth of the cascade. It may also be suggested to apply silicon at the back, between the support and the cascade, so that it offers a superior watertightness. (Please refer to the installation drawing)
6. Connect the water entry to the cascade and check the watertightness.
7. Install and fasten the support panel section (cascade fastened and connected to its final place)
8. Make sure that the cascade is level and that it has a slight water flow angle as suggested above. If you must make a correction to the level, simply loosen the screws, reposition, and tighten the cascade's screws.
9. Make sure that the whole shower area and the space surrounding the cascade are waterproof according to the method used for this product.

Note:

-Do not make holes or try to modify the cascade, this would make all guaranteed void and would damage the cascade.



FOSK®

Telephone: 1-514-418-7059

Email : info@fosk.ca

Web site: www.foskproduct.com

